



## Keyless Shaft Locking Assembly /Locking Device/Locking Elements/Power Lock

### LD120

Recommended Application Tolerance:

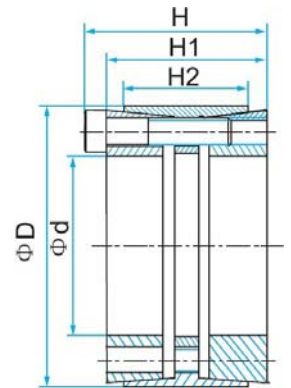
Shaft: h7-h8

Hub: H7-H8

Roughness: Interface 1.6um

Non-interface: 1.6-3.2um

Interchangeable with KLEE, TLK451, RCK11, MAV4061, KTR400



Dimensions					Transmissible Axial Force	Transmissible Torque	Interface Pressure(N/mm <sup>2</sup> )		Locking Screws (DIN912, Grade12.9)		
mm	mm	mm	mm	mm	KN	Nm	Bore/shaft	Hub	Quantity	Size	Tightening
Φd	ΦD	H	H1	H2	Ft	Mt	P	P1	n	Code x length	Torque Nm
25	55	46	40	32	64	799	314	107	6	M6x35	17
28	55	46	40	32	64	895	281	107	6	M6x35	17
30	55	46	40	32	64	959	262	107	6	M6x35	17
35	60	60	54	44	75	1306	185	83	7	M6x45	17
38	75	62	54	44	135	2567	308	121	7	M8x50	41
40	75	62	54	44	135	2702	293	121	7	M8x50	41
42	75	62	54	44	135	2837	279	121	7	M8x50	41
45	75	62	54	44	135	3040	260	121	7	M8x50	41
48	80	72	64	56	154	3707	216	102	8	M8x55	41
50	80	72	64	56	154	3861	207	102	8	M8x55	41
55	85	72	64	56	174	4779	212	108	9	M8x55	41
60	90	72	64	56	193	5793	216	113	10	M8x55	41
65	95	72	64	56	193	6276	199	107	10	M8x55	41
70	110	88	78	70	313	10951	235	120	10	M10x60	83
75	115	88	78	70	313	11733	220	115	10	M10x60	83
80	120	88	78	70	344	13768	227	121	11	M10x60	83
85	125	88	78	70	376	15959	233	127	12	M10x60	83
90	130	88	78	70	376	16898	220	122	12	M10x60	83
95	135	88	78	70	376	17837	208	117	12	M10x60	83
100	145	112	100	90	501	25029	211	113	11	M12x80	145
110	155	112	100	90	546	30039	209	115	12	M12x80	145
120	165	112	100	90	637	38226	224	127	14	M12x80	145
130	180	130	116	104	743	48270	201	117	12	M14x90	230
140	190	130	116	104	866	60654	217	129	14	M14x90	230
150	200	130	116	104	928	69628	217	132	15	M14x90	230
160	210	130	116	104	990	79220	217	134	16	M14x90	230
170	225	164	148	134	1186	100851	206	116	14	M16x110	360
180	235	164	148	134	1271	114414	208	119	15	M16x110	360
190	250	164	148	134	1356	128814	210	119	16	M16x110	360
200	260	164	148	134	1356	135594	200	115	16	M16x110	360



# Chengdu Leno Machinery Co., Ltd

Dimensions					Transmissible Axial Force	Transmissible Torque	Interface Pressure(N/mm <sup>2</sup> )		Locking Screws (DIN912, Grade12.9)		
mm	mm	mm	mm	mm	KN	Nm	Bore/shaft	Hub	Quantity	Size	Tightening
Φd	ΦD	H	H1	H2	Ft	Mt	P	P1	n	Code x length	Torque Nm
220	285	164	148	134	1526	167805	204	118	18	M16x110	360
240	305	166	150	134	1626	195100	182	131	20	M16x110	360
260	325	166	150	134	1707	221930	176	129	21	M16x110	360
280	355	197	177	165	2244	314194	179	131	18	M20x130	690
300	375	197	177	165	2494	374042	186	138	20	M20x130	690
320	405	197	177	165	2618	418936	183	134	21	M20x130	690
340	425	197	177	165	2743	466307	180	134	22	M20x130	690
360	455	224	202	190	3849	627940	188	119	21	M22x160	930
380	475	224	202	190	3655	694389	186	119	22	M22x160	930
400	495	224	202	190	3987	797384	193	125	24	M22x160	930