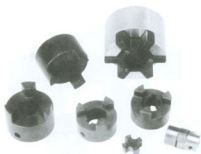
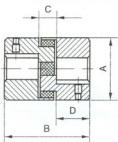


# L Couplings Dimensions



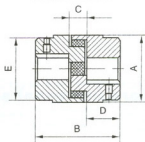
- Good temperature and oil resistance
- Free of maintenance
- Simple structure and easy to install
- The rubbers can be individually replaced when they are worn
- Standard products are finished bore products needed.

CL035-CL150



The couplings are made of sintered alloy, with smooth surfaces and precise dimensions.

CL190-CL276



The couplings are made of GG25 material. The surface is machined and zinc plating treated. The quality is high.

Type	Fundamental dimensions					Torgue needed kgm	Rotational speed r/om	Bore max mm	Stock bore sizes of the couplings	Mass kg
	A	B	C	D	E					
CL035	16	21	8	6.5	-	0.05	30.000	9	8	0.03
CL050	28	45	12	15.5	-	0.3	17.000	16	10, 12, 14, 16	0.13
CL070	35	51	13	19	-	0.5	13.000	19	10, 12, 14, 16, 18, 19	0.24
CL075	45	55	13	20.5	-	1.0	10.000	24	12, 14, 16, 18, 19, 20, 22, 24	0.40
CL090	54	55	13	21	-	1.6	9.000	25	14, 16, 18, 19, 20, 22, 24, 25	0.68
CL095	54	64	13	25.5	-	2.2	9.000	29	14, 16, 18, 19, 20, 20, 24, 25, 28	0.71
CL099	65	73	19	27	-	4.5	7.000	35	20, 22, 24, 25, 28, 30, 32, 35	1.22
CL100	65	89	19	35	-	5.0	7.000	35	20, 22, 24, 25, 28, 30, 32, 35	1.40
CL110	84	108	22	43	-	9.0	5.000	42	25, 25, 30, 32, 35, 38, 40, 42	3.0
CL150	96	115	25	45	80	15.0	5.000	48	30, 32, 35, 38, 40, 42, 45, 48	5.0
CL190	115	134	25	54	102	20.0	5.000	54	35, 38, 40, 42, 45, 48, 50	7.6
CL225	127	154	26	64	108	30.0	4.200	67	38, 40, 42, 45, 48, 50, 55, 60, 65	9.0
CL276	157	200	41	79	127	54.2	4.200	73	45, 48, 50, 55, 60, 65, 70	21.0

Keyway dimensions conform to DIN6885, JIS B 1310-1976, UNI 6604-1969, GB 1095-1979 standards.