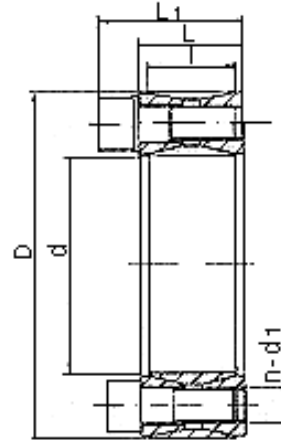


ML2



| Part NO. | Dimensions | | | | | Screw | | Rated Load | | Pressure between Shaft Locking and The Shaft: P_f N/mm ² | Pressure between Shaft Locking and the Parts: P_r N/mm ² | Torque to Fasten Screws M_A N·m | Weight kg | | | |
|-------------|------------|-----|----|----|----------------|----------------|----|----------------------|-------------------|---|---|-----------------------------------|-----------|------|-----|------|
| | d | D | l | L | L ₁ | d ₁ | n | Axial Force F_1 KN | Torque M_1 KN·m | | | | | | | |
| | mm | | | | | | | | | | | | | | | |
| ML2 20X47 | 20 | 47 | 17 | 20 | 27.5 | M6 | 8 | 27 | 0.27 | 210 | 90 | 14 | 0.24 | | | |
| ML2 22X47 | 22 | | | | | | | | 0.30 | | | | | 195 | 90 | 0.23 |
| ML2 25X50 | 25 | 50 | | | | | | 10 | 33 | 9 | 30 | | 0.38 | 190 | 95 | 0.25 |
| ML2 28X55 | 28 | | | | | | | | | | | | 0.47 | 185 | 95 | 0.30 |
| ML2 30X55 | 30 | 60 | | | | | | 12 | 40 | 10 | 40 | | 0.50 | 175 | 95 | 0.29 |
| ML2 35X60 | 35 | | | | | | | | | | | | 0.70 | 180 | 105 | 0.32 |
| ML2 38X63 | 38 | 63 | | | | | | 14 | 46 | 14 | 46 | | 0.88 | 185 | 105 | 0.33 |
| ML2 40X65 | 40 | | | | | | | | | | | | 0.92 | 180 | 110 | 0.34 |
| ML2 42X72 | 42 | 72 | 20 | 24 | 33.5 | M8 | 12 | 65 | 1.36 | 200 | 117 | 35 | 0.48 | | | |
| ML2 45X75 | 45 | | | | | | | 75 | 72 | 1.62 | 210 | | 125 | 0.57 | | |
| ML2 50X80 | 50 | | | | | | | 80 | 71 | 1.77 | 190 | | 115 | 0.60 | | |
| ML2 55X85 | 55 | | | | | | | 85 | 83 | 2.27 | 200 | | 130 | 0.63 | | |
| ML2 60X90 | 60 | | | | | | | 90 | 2.47 | 180 | 120 | | 0.69 | | | |
| ML2 65X95 | 65 | | | | | | | 95 | 93 | 3.04 | 190 | | 130 | 0.73 | | |
| ML2 70X110 | 70 | 110 | 24 | 28 | 39.0 | M10 | 14 | 132 | 4.60 | 210 | 130 | 70 | 1.26 | | | |
| ML2 75X115 | 75 | | | | | | | 115 | 131 | 4.90 | 195 | | 125 | 1.33 | | |
| ML2 80X120 | 80 | | | | | | | 120 | 5.20 | 180 | 120 | | 1.40 | | | |
| ML2 85X125 | 85 | | | | | | | 125 | 148 | 6.30 | 195 | | 130 | 1.49 | | |
| ML2 90X130 | 90 | | | | | | | 130 | 147 | 6.60 | 180 | | 125 | 1.53 | | |
| ML2 95X135 | 95 | | | | | | | 135 | 167 | 7.90 | 195 | | 135 | 1.62 | | |
| ML2 100X145 | 100 | 145 | 29 | 33 | 47.0 | M12 | 14 | 192 | 9.60 | 185 | 130 | 125 | 2.01 | | | |
| ML2 105X150 | 105 | | | | | | | 150 | 190 | 9.98 | 185 | | 130 | 2.10 | | |
| ML2 110X155 | 110 | | | | | | | 155 | 191 | 10.50 | 180 | | 125 | 2.15 | | |
| ML2 120X165 | 120 | | | | | | | 165 | 218 | 13.10 | 185 | | 135 | 2.35 | | |
| ML2 125X170 | 125 | | | | | | | 170 | 220 | 13.78 | 180 | | 130 | 2.95 | | |



SiChuan Mighty Power-Trans.

| | | | | | | | | | | | | | | |
|---------------|------|------|--------|--------|-------|-----|----|------|---------|--------|-----|-------|--------|--------|
| ML2 130X180 | 130 | 180 | 34 | 38 | 52.0 | | 20 | 272 | 17.60 | 165 | 120 | | 3.51 | |
| ML2 140X190 | 140 | 190 | | | | | 22 | 298 | 20.90 | 165 | 125 | | 3.85 | |
| ML2 150X200 | 150 | 200 | | | | | 24 | 324 | 24.20 | 170 | 125 | | 4.07 | |
| ML2 160X210 | 160 | 210 | | | | | 26 | 350 | 28.00 | | 130 | | 4.30 | |
| ML2 170X225 | 170 | 225 | 38 | 44 | 60 | M14 | 22 | 386 | 32.80 | 160 | 120 | 190 | 5.78 | |
| ML2 180X235 | 180 | 235 | | | | | 24 | 420 | 37.80 | 165 | 125 | | 6.05 | |
| ML2 190X250 | 190 | 250 | 46 | 52 | 68 | | 28 | 490 | 46.50 | 150 | 115 | | 8.25 | |
| ML2 200X260 | 200 | 260 | | | | | 30 | 525 | 52.50 | 150 | 115 | | 8.65 | |
| ML2 210X275 | 210 | 275 | 50 | 56 | 74 | M16 | 24 | 599 | 62.89 | 151 | 115 | 295 | 10.10 | |
| ML2 220X285 | 220 | 285 | | | | | 26 | 620 | 68.00 | 150 | 115 | | 11.22 | |
| ML2 240X305 | 240 | 305 | | | | | 30 | 715 | 85.50 | 160 | 125 | | 12.20 | |
| ML2 250X315 | 250 | 315 | | | | | 32 | 768 | 96.00 | 162 | 125 | | 12.70 | |
| ML2 260X325 | 260 | 325 | | | | | 34 | 800 | 104.00 | 165 | 130 | | 13.20 | |
| ML2 280X355 | 280 | 355 | 60 | 66 | 86.5 | M18 | 32 | 915 | 128.00 | 145 | 115 | 405 | 19.20 | |
| ML2 300X375 | 300 | 375 | | | | | 72 | 78 | 100.5 | M20 | 36 | | 1020 | 153.00 |
| ML2 320X405 | 320 | 405 | 1310 | 210.00 | 120 | | | | | | | 29.60 | | |
| ML2 340X425 | 340 | 425 | 224.00 | 115 | 31.10 | | | | | | | | | |
| ML2 360X455 | 360 | 455 | 84 | 90 | 116.0 | M22 | 36 | 1630 | 294.00 | | 145 | 115 | 780 | 42.20 |
| ML2 380X475 | 380 | 475 | | | | | | 1620 | 308.00 | 135 | | 110 | | 44.00 |
| ML2 400X495 | 400 | 495 | | | | | | 1610 | 322.00 | 130 | 105 | 46.00 | | |
| ML2 420X515 | 420 | 515 | | | | | | 40 | 1780 | 374.00 | 135 | 110 | | 50.00 |
| ML2 450X555 | 450 | 555 | 96 | 102 | 130.0 | M24 | 40 | 2050 | 461.25 | 124 | 100 | 1000 | 65.00 | |
| ML2 480X585 | 480 | 585 | | | | | 42 | 2160 | 518.40 | | 100 | | 71.00 | |
| ML2 500X605 | 500 | 605 | | | | | 44 | 2240 | 560.00 | 123 | 100 | | 72.60 | |
| ML2 530X640 | 530 | 640 | | | | | 45 | 2330 | 617.00 | 121 | 100 | | 83.60 | |
| ML2 560X670 | 560 | 670 | | | | | 48 | 2440 | 680.00 | 120 | 100 | | 85.00 | |
| ML2 600X710 | 600 | 710 | | | | | 50 | 2580 | 775.00 | 118 | 100 | | 91.00 | |
| ML2 630X740 | 630 | 740 | | | | | 52 | 2680 | 844.00 | 117 | 105 | | 94.00 | |
| ML2 670X780 | 670 | 780 | | | | | 56 | 2820 | 944.00 | 116 | 100 | | 101.00 | |
| ML2 710X820 | 710 | 820 | | | | | 60 | 2970 | 1054.00 | 115 | 100 | | 106.00 | |
| ML2 750X860 | 750 | 860 | | | | | 62 | 3130 | 1173.00 | 115 | 100 | | 112.00 | |
| ML2 800X910 | 800 | 910 | | | | | 66 | 3260 | 1300.00 | 112 | 100 | | 118.00 | |
| ML2 850X960 | 850 | 960 | | | | | 70 | 3500 | 1487.00 | 113 | 100 | | 125.00 | |
| ML2 900X1010 | 900 | 1010 | | | | | 75 | 3680 | 1650.00 | 112 | 100 | | 132.00 | |
| ML2 950X1060 | 950 | 1060 | | | | | 80 | 3870 | 1838.00 | | 100 | | 139.00 | |
| ML2 1000X1110 | 1000 | 1110 | | | | | 82 | 4000 | 2000.00 | 110 | 100 | | 146.00 | |

Remarks: The Mechanical Performance Grade of Screws for ML2 is 12.9.