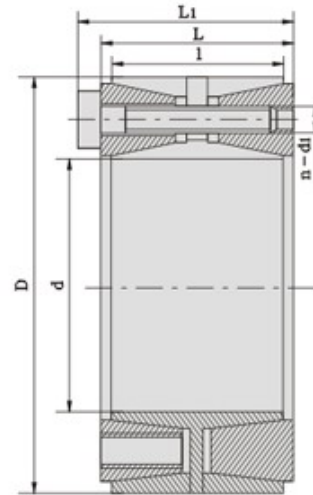


ML 5



Part NO.	Dimensions					Screw		Rated Load		Pressure between Shaft Locking and The Shaft: P_f N/mm ²	Pressure between Shaft Locking and the Parts: P_r N/mm ²	Torque to Fasten Screws: M_A N·m	Weight kg			
	d	D	l	L	L ₁	d_1	n	Axial Force: F_1 KN	Torque M_1 KN·m							
	mm															
ML5 100X145	100	145	60	65	77	M12	10	288	14.4	192	132	145	4.1			
ML5 110X155	110	155							15.8					175	123	4.4
ML5 120X165	120	165							20.8					192	139	4.8
ML5 130X180	130	180	68	74	86	M12	15	433	28.1	193	139	145	6.5			
ML5 140X190	140	190							36.3					214	157	7.0
ML5 150X200	150	200							39.0					200	150	7.4
ML5 160X210	160	210							48.5					219	167	7.8
ML5 170X225	170	225	75	81	95	M14	18	712	60.6	215	162	230	10.0			
ML5 180X235	180	235						64.1	203					155	10.6	
ML5 190X250	190	250	88	94	108		20	792	75.2	178	135		14.3			
ML5 200X260	200	260					24	950	95.0					203	156	15.0
ML5 210X275	210	275	98	104	120	M16	18	970	102.0	187	142	355	17.5			
ML5 220X285	220	285						990	109.0					183	141	19.8
ML5 240X305	240	305					1318	158.0	215	170	22.0					
ML5 250X315	250	315					1340	167.5								
ML5 260X325	260	325					1370	178.0					172	23.0		
ML5 280X355	280	355	120	126	144	M18	24	1590	222.5	188	149	485	35.2			
ML5 300X375	300	375						1650	248.0					183	146	37.4
ML5 320 405	320	405	135	142	162	M20	25	2140	344.0	192	152	690	51.3			
ML5 340X425	340	425						365.0	181					144	54.1	
ML5 360X455	360	455	158	165	187	M22	25	480.0	176	139	133	930	75.4			
ML5 380X475	380	475						508.0	166					128	79.0	
ML5 400X495	400	495						535.0	158					128	82.8	
ML5 420X515	420	515						3200	673.0					181	147	86.5



SiChuan Mighty Power-Trans.

ML5 450X555	450	555	172	180	204	M24	32	3700	832.5	175	142	1200	112.0
ML5 480X585	480	585						3950	948.0		143		119.0
ML5 500X605	500	605						988.0	168	139	123.0		
ML5 530X640	530	640	190	200	227	M27	30	4320	1145.0	157	130	1600	151.0
ML5 560X670	560	670							1210.0	148	124		160.0
ML5 600X710	600	710						4610	1380.0	147	124		170.0
Remarks: The Mechanical Performance Grade of Screws for ML5 is 12.9.													