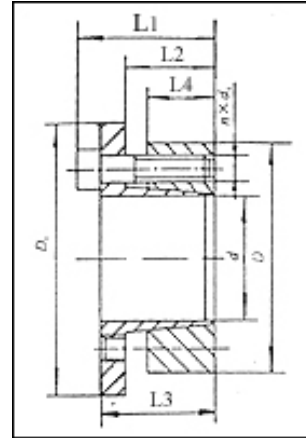


# ML 6



Part NO.	Dimensions							Rated Load		Screws			Pressure between Shaft and The Shaft: $P_f$ N/mm <sup>2</sup>	Torque to Fasten Screws $P_f$ N/mm <sup>2</sup>	Weight kg
	d	D	L <sub>4</sub>	L <sub>3</sub>	L <sub>2</sub>	D <sub>1</sub>	L <sub>1</sub>	Axial Force $F_1$ KN	Torque $M_1$ KN·m	$d_1$	n	$M_A$ N·m			
	mm														
ML6 14X55	14	55	17	30	22	62	38	18	127	M8	3	25	208	52.5	0.48
ML6 16X55	16	55	17	30	22	62	38	18	142	M8	3	25	181	52.5	0.47
ML6 18X55	18	55	17	30	22	62	38	18	157	M8	3	25	161	52.5	0.46
ML6 16X55	19	55	17	30	22	62	38	18	165	M8	3	25	152	52.5	0.46
ML6 20X55	20	55	17	30	22	62	38	18	172	M8	3	25	145	52.5	0.45
ML6 22X55	22	55	17	30	22	62	38	25.5	285	M8	3	35	186	75	0.44
ML6 24X55	24	55	17	30	22	62	38	25.5	307	M8	3	35	170	75	0.42
ML6 25X55	25	55	17	30	22	62	38	25.5	315	M8	3	35	163	75	0.41
ML6 28X55	28	55	17	30	22	62	38	31.5	435	M8	3	41	175	89	0.39
ML6 30X55	30	55	17	30	22	62	38	31.5	472	M8	3	41	163	89	0.37
ML6 24X65	24	65	17	30	22	72	38	37.4	440	M8	5	30	244	90	0.62
ML6 25X65	25	65	17	30	22	72	38	37.4	460	M8	5	30	234	90	0.61
ML6 28X65	28	65	17	30	22	72	38	43.6	600	M8	5	35	243	105	0.58
ML6 30X65	30	65	17	30	22	72	38	43.6	640	M8	5	35	227	105	0.56
ML6 32X65	32	65	17	30	22	72	38	43.6	690	M8	5	35	213	105	0.55
ML6 35X65	35	65	17	30	22	72	38	52.5	910	M8	5	41	234	126	0.51
ML6 38X65	38	65	17	30	22	72	38	52.5	990	M8	5	41	216	126	0.48
ML6 40X65	40	65	17	30	22	72	38	52.5	1050	M8	5	41	205	125	0.46
ML6 30X80	30	80	20	33	25	87	41	52.4	780	M8	7	30	232	87	1.01
ML6 32X80	32	80	20	33	25	87	41	52.4	830	M8	7	30	217.5	87	0.99
ML6 35X80	35	80	20	33	25	87	41	61	1060	M8	7	35	232	102	0.96
ML6 38X80	38	80	20	33	25	87	41	61	1150	M8	7	35	214	102	0.92
ML6 40X80	40	80	20	33	25	87	41	61	1220	M8	7	35	203	102	0.89
ML6 42X80	42	80	20	33	25	87	41	73.5	1540	M8	7	41	233	122	0.86
ML6 45X80	45	80	20	33	25	87	41	73.5	1650	M8	7	41	217	122	0.82
ML6 48X80	48	80	20	33	25	87	41	73.5	1760	M8	7	41	203	122	0.76
ML6 50X80	50	80	20	33	25	87	41	73.5	1830	M8	7	41	195	122	0.73

Remarks: The Mechanical Performance Grade of Screws for ML6 is 12.9.