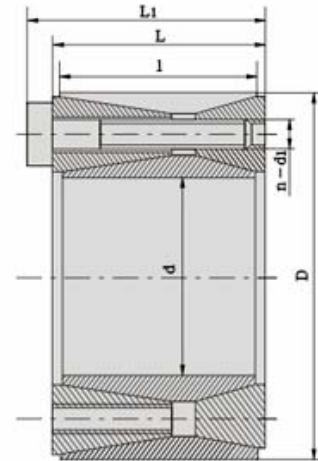


# ML 4



Part NO.	Dimensions					Screw		Rated Load		Pressure between Shaft Locking and The Shaft: $P_f$ N/mm <sup>2</sup>	Pressure between Shaft Locking and the Parts: $P_r$ N/mm <sup>2</sup>	Torque to Fasten Screws $M_A$ N·m	Weight kg
	d	D	l	L	L <sub>1</sub>	d <sub>1</sub>	n	Axial Force $F_1$ KN	Torque $M_1$ KN·m				
	mm												
ML4 70x120	70	120	56	62	74	M12	8	197	6.85	201	117	145	3.3
ML4 80X130	80	130					12	291	11.65	263	162		3.7
ML4 90X140	90	140					290	13.00	234	150	4.0		
ML4 100X160	100	160	74	80	94	M14	15	389	19.70	213	133	230	7.2
ML4 110X170	110	170						483	22.60	242	157		7.7
ML4 120X180	120	180						482	28.90	222	148		8.3
ML4 125X185	125	185						480	30.00	212	143		8.5
ML4 130X190	130	190						31.20	205	140	8.8		
ML4 140X200	140	200						574	40.20	227	159		9.3
ML4 150X210	150	210					18	572	42.90	212	152		10.0
ML4 160X230	160	230						800	64.00	227	158		14.9
ML4 170X240	170	240						795	67.80	214	152		15.7
ML4 180X250	180	250	88	94	110	M16	21	923	83.00	235	170	355	16.4
ML4 190X260	190	260						921	88.00	223	163		17.2
ML4 200X270	200	270					24	1050	105.00	242	179		18.8
ML4 210X290	210	290						20	1118	117.30	197		143
ML4 220X300	220	300	110	116	134	M18	21	1120	123.00	189	138	485	27.7
ML4 240X320	240	320					24	1280	153.00	198	148		29.8
ML4 250X330	250	330					27	1282	160.20	205	157		31.0
ML4 260X340	260	340									1430		186.00
ML4 280X370	280	370					130	136	156	M20	24		1650
ML4 300X390	300	390	245.00	179	138	49.0							

Remarks: The Mechanical Performance Grade of Screws for ML4 is 12.9.